

Domo 10 A+B

SOLID EPOXY MASTIC

Solid mastic with extreme performance in terms of bonding strength and resistance. Suitable for bonding and lamination, even on wet surfaces, it is also ideal for mixed bonding and in extreme temperature conditions.



 **EXTREME BONDING**

 **ALSO BONDS ON WET SURFACES**

 **IDEAL FOR MIXED LAMINATION AND BONDING**

Technical data:

- ◆ **Density at 25°C gr/cm³:** 1.3 / 1.4
- ◆ **Standard colour:** coloured
- ◆ **Appearance:** white paste

Approximate consumption:

- ◆ **For grouting:**
20-30 linear meters
- ◆ **For bonding:**
30-40 mt²

The stated duration is only approximate



Indoor
Outdoor



Natural stone



Quartz



Ceramic

How to apply it:

- ◆ Remove the desired quantity of product from the container and weigh it.
- ◆ Comply with the ratio between part A and part B as indicated in the TDS.
- ◆ Use clean tools when mixing.
- ◆ If necessary, add liquid or pigment dyes before mixing with the hardener.
- ◆ Make sure that the material on which the product will be applied is clean and dry.
- ◆ To clean tools soiled with mastics, use non-greasy solvents, e.g. Acetone or Butyl Acetate. Use the necessary PPE.
- ◆ Read the technical and safety data sheet carefully.
- ◆ Close the containers with their original caps for correct storage.
- ◆ Avoid prolonged contact with air.

Performance:

| | |
|---------------------------------|-------------|
| Adhesion strength [Mpa] | marble > 17 |
| Gel time in mass at 25°C | 2 h 30 min |
| Workability time at 25°C | 24 h |
| Extraclear | no |
| Stability to sunlight | low |
| Wet effect | superb |
| Spreadability | medium |
| Adhesion on wet | yes |

Safety measures:

Before use, please read the instructions in the safety data sheet and the notes on the packaging. Close the container after use. For professional use only.

Warnings:

When a surface is treated for the first time, it is advisable to evaluate its effect or adhesion on a sample or hidden corner.



Part A



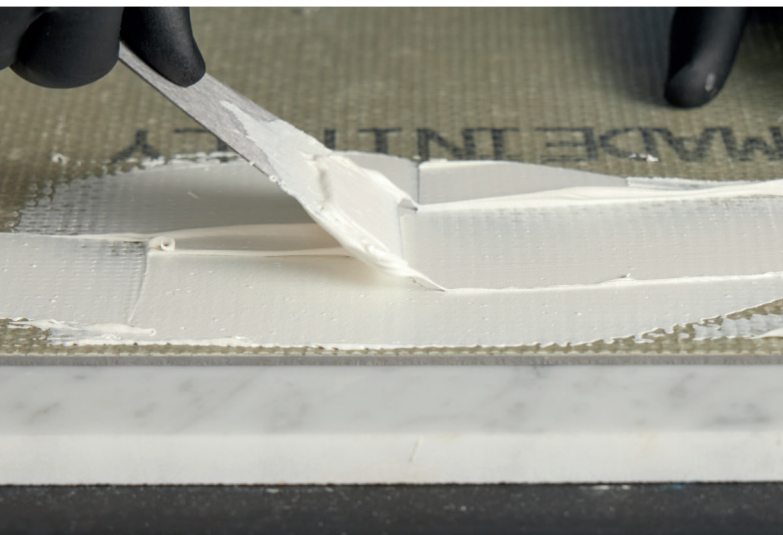
Part B



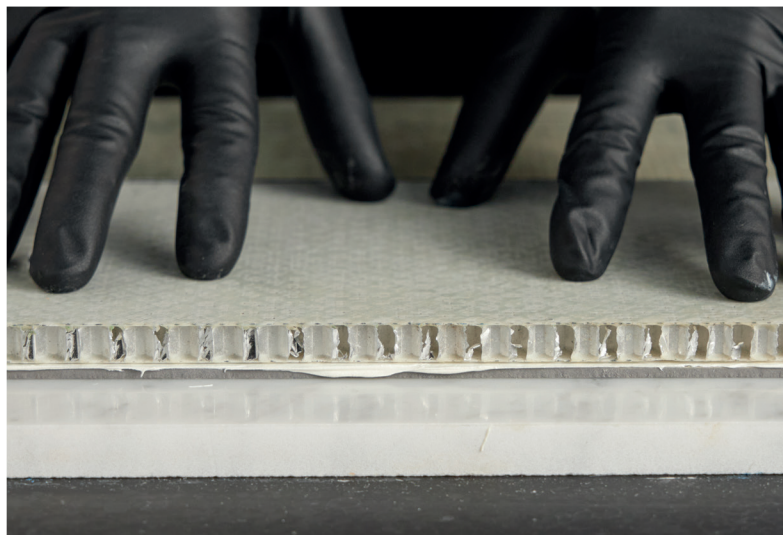
Mixing



Post mix verticality



Mixed product appearance



Hardened product appearance